



WOOD'S HOMES

Building good mental health with...

The Future in Mind

2024-2025 Report to the Community

A mindful future begins with a mindful environment



The demand for mental health services has never been greater, yet there remains a critical shortage of treatment beds for young people in Alberta. So Wood's Homes is adding beds and building with the future in mind.

Times are changing and so is the look and feel of environments where young people in treatment live. We are smarter today and more aware of how environment impacts mental health.

On Jan. 15, 2025, Wood's Homes opened the first of several buildings as part of a larger capital revitalization. Cottage E (as we call it) is the first purpose-built structure in our agency's history.

This \$8M, 10-bedroom home now serves more young people who live on our Parkdale campus.

Thanks to a \$2.75M-contribution from the province, a \$450,000 gift from PETRONAS Canada, and several generous community partners, this beautiful 10,000-square-foot building now replaces outdated environments.

Cottage E is a blueprint for how healing architecture plays a critical role in mental health treatment.



For example:

- We know that daylight is proven to reduce client stress; the cottage is filled with natural light.
- Colours, and their ability to calm, were thoughtfully chosen; thus the use of blues (to promote calming), greens and yellows (linking to environment) are incorporated.
- A multitude of spaces buffer excessive noise, as echoes and repetitive sounds can promote delusional voices.

- Positive facial expressions and depictions of caring relationships are proven to be effective therapeutic tools and are reflected in the artwork.
- Other essential design principles include safety and security, connection to nature, and social connectivity.

Cottage E signals a philosophical shift with dignity woven into every detail. It represents what is defined as a modern, 21st-century treatment home, the first of many to be constructed in the **FUTURE** of Wood's Homes.

Visit Page 21 to see our next dream: A 21st century treatment home on our Bowness campus.



Safety Leaders in our Sector



We are very proud to have earned a Certificate of Recognition (COR) over this past year. This is Alberta's benchmark for workplace safety, highlighting a steadfast commitment for staff and client well-being.

This certificate recognizes our agency's excellence in health and safety management across the agency. This was a collective effort among all 600 staff in every location and would not have been achieved without the relentless commitment of our employees. COR certification positions our agency as a leader in the social services sector as it is typically utilized by various industries such as construction, mining, forestry, etc.

And this is just the beginning.

It's all about keeping safe

Wood's Homes is now an associate member of the Continuing Care Safety Association (CCSA) - the partner that certified our COR safety standard.

While CCSA membership isn't yet required by Child and Family Services, CFS is collaborating with CCSA and ALIGN to raise Occupational Health and Safety expectations for every child- and youth-care facility.

Joining now keeps us ahead of the curve and strengthens our commitment to the safest possible workplaces and living spaces.

CEO Message

This past month marked my fifth year as the CEO of this incredible organization. As we enter our 111th year of service, I find myself reflecting on time - past, present, and future - all of which hold deep significance at Wood's Homes.

For over 110 years, we have honoured our past while remaining fully engaged in the present, serving children, young people, and families facing mental health challenges. At the same time, we never lose sight of the future - our vision is always forward-facing.

Demand for our services continues to grow, making our mission clearer than ever: to continually improve, expand, and find new ways to meet the needs of our communities. This means actively reaching out to raise awareness about the many ways we can help.

Over the past year, we've strengthened our programs, broadened our reach, and welcomed new talent - adding more foster-care beds, expanding group-care spaces in Calgary and Lethbridge, and growing Youth Opportunity Hubs in both cities.

I'm proud to share that we achieved Alberta's Certificate of Recognition (COR) this year. COR, typically reserved for industries like construction, forestry, and mining, required a rigorous multi-year audit of our health and safety systems. Thanks to the unwavering commitment of our 600-plus employees, Wood's Homes has become a leader in workplace safety within the social service sector.

Growth remains a key focus of our 2023-2028 Strategic Plan. In January, we opened Cottage E—our first purpose-built live-in treatment program for children and young people—adding 10 much-needed beds offering a therapeutic and recovery environment.

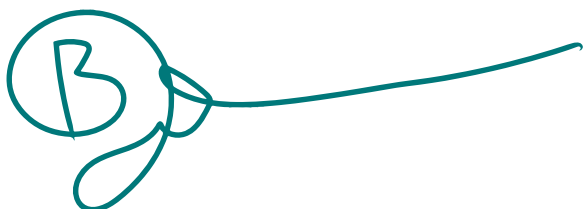
But there is still more work to do. Many of the buildings on our Bowness campus date back to the 1970s and no longer meet modern standards of care. Looking ahead, our Capital Campaign aims to create the next generation of therapeutic environments.

Together, we will ensure that Wood's Homes remains a place where children and young people heal, families find hope, and the future is always in sight. No matter what challenges and opportunities lie ahead, we will continue to serve and stand by our mission: building good mental health and well-being.



"We are deeply grateful to our community partners, donors, and governments who stand with us - and we invite you to help shape our 21st-century vision."

Bjorn Johansson - Chief Executive Officer,
Wood's Homes



Bjorn Johansson

Chief Executive Officer,
Wood's Homes

Wood's Homes is proudly a provincial organization. We humbly acknowledge the many First Nations, and Metis districts from the most Southern parts of the province to the most Northern parts.

We acknowledge their contributions and responsibilities as caregivers to the lands they have walked since time immemorial.

We are all treaty people, and Wood's Homes is committed to coming together in a good way that continues to build good relations for all people.



Chair of the Board Message

Wood's Homes has always met the moment. From Reverend George and Annie Wood's humble house in 1914 to today's network of 40-plus programs serving more than 15,000 children, young people, and families each year, we move forward with the future in mind.

A mindful future begins with the places we build and the people we empower. Cottage E, our new purpose-built home on the Parkdale campus, shows what tomorrow's live-in treatment can be: trauma-informed design, culturally safe spaces, and dignity woven into every corner.

The same spirit of innovation guided the Board as we expanded services in Lethbridge. Within months of identifying an urgent gap, Wood's Homes secured a residence, hired and trained staff, and opened doors - agility possible only because of the strong foundation our donors and predecessors created.

Needs are rising and cases are more complex than ever, yet our teams continue to meet that challenge through partnership, collaboration, and leadership. The new Indigenous Initiatives Centre is a powerful example: Indigenous staff, Knowledge Keepers, and allies braiding culture into daily care so every young person feels they belong.

We also invest in the people who make healing possible. Research Chair Dr. Angelique Jenney is developing leading-edge simulation tools that prepare counsellors faster and more effectively. And the agency's recent Certificate of Recognition (COR) places Wood's Homes among the first social-service organizations in Alberta to achieve this rigorous health-and-safety standard - proof that caring for clients starts with caring for staff.

With the future in mind, we will keep pushing toward best-practice infrastructure, evidence-based treatment, and empowered employees. Thank you to the partners, funders, and community allies who walk beside us.

Join us in shaping this mindful future - so every child can thrive in a place of safety, belonging, and hope.



"A mindful future begins with the places we build and the people we empower."

Lisa Fleck - Chair of the Board,
Wood's Homes and Wood's Homes Society

A handwritten signature in green ink, appearing to be 'LF', with a small period at the end.

Lisa Fleck

Chair of the Board,
Wood's Homes and Wood's Homes Society

Strategic Plan Priorities (2023–2028)

Building Our Mindful Future



The following pages of this Report to the Community are colour-coded based on the following Strategic Plan priorities:

Greater impact on mental health and wellness

Wood's Homes offers a wide range of programs and supports tailored to meet the needs of children, youth, families, and adults in our communities. As a leader in children's mental health, our clients can receive help not just during their childhood years, but increasingly throughout their lifespan as we broaden the scope of services provided.

A proud, healthy and inclusive workplace culture

Wood's Homes is a safe, trusting, and diverse organization that our staff are proud to be part of. Our employees are caring, confident, and competent because of the level of training, supervision, and support they receive.

Inclusive and culturally responsive practice

Our integrated practices ensure that our clients' diverse needs and cultural perspectives are thoughtfully recognized and supported. Wood's Homes is a growing and responsive ally with Indigenous peoples, the LGBTQ+ community, cultural, ethnic, and religious groups.

Courageous strategic growth through external audiences

Wood's Homes has solid, collaborative relationships with other agencies and organizations. These essential relationships allow us to provide more integrated and diverse programs and services for our clients.

Impactful community engagement

Wood's Homes has solid and positive relationships with community partners and is essential to the communities we both live in and serve.

Preferred venture and community partner

Wood's Homes has the funding and resources necessary to achieve its mission based on long-standing relationships with government and its corporate and community donors.

Modern infrastructure based on best practices

Our facilities are becoming modernized with thoughtful intention in their layout and design to help ensure therapeutic spaces that are safe, welcoming, environmentally friendly, technologically supported and efficient.

Greater impact on mental health and wellness

Inglewood Opportunity Hub

The Inglewood Opportunity Hub (IOH) is Wood's Homes' front door for young people experiencing homelessness, mental health challenges, substance use issues, or joblessness. The Hub provided a safe and supportive community for 234 clients over the past year.

For each of the 160 clients who accessed multiple in-house programs, risk levels plummeted and personal resiliency skyrocketed, proving the power of a hub service delivery model.

2024 at a glance

- The LEAD employment services team delivered 851 hours of pre-employment coaching placing 34 young people in paid work and helping 27 re-engage in school.
- The Mobile outreach team made 2,235 contacts and distributed 1,715 harm-reduction kits - a 224% increase.
- The Recovery Team hosted 74 clients in 24 Wellbriety Circles - an Indigenous-focused healing group.
- The Drop-In services team supported 38 young people to complete housing applications - a 310% jump over last year
- The IOH staff and peer mentor team hosted 79 low- or no-cost wellness events - from bowling to beading - plus free haircuts, dental check-ups, and Indigenous cultural teachings through Siksika Outreach.
- IOH in-house Social Enterprises created 21 paid placements, giving clients real wages and supported employment experiences to add to their resumés.



Behind every number is a young person rewriting their story. For example, one young adult called a Zoo Lights field trip "one of the best days of my life," and a teen left a Wellbriety circle saying, "I finally feel seen."

Outcomes like this show why the IOH is central to our strategic goal of greater impact on mental health and wellness. By uniting housing, counselling, employment, and cultural connection in one bright, welcoming community, we give Calgary's most vulnerable young people a pathway - not just out of crisis, but toward recovery and a life where they can thrive.

Greater impact on mental health and wellness

Popular counselling service models expand

Eastside Community Mental Health Services (ECMHS) is a longtime service at Wood's Homes that offers immediate, no-cost, mental health support from an integrated, ethnocultural team.

Located in Calgary's Northgate Mall and founded in 1990, its services have evolved over the years in keeping with trends and changes in mental health service delivery.



Walk into Eastside and you will be met with someone who provides individual options. Perhaps you are looking for a therapist or a counsellor, or you just need help navigating the city's sometimes complex mental health system.

This service model, including virtual counselling in various forms, is very popular and will continue into the future, with client feedback guiding service directions.

Wood's Homes also offers free mental health and addictions support, health information and referrals at two libraries in Calgary – Central and Crowfoot. And due to the popularity at the Central Library Wellness Desk, our services are now available 7 days a week.


The numbers below show that Eastside is an integral part of our agency and provides a vital service to the community. We served close to 11,000 families, young people and adults last year.

2024 at a glance:

 **7,935** calls, texts, and chats

 **1,003** wellness desk visits

 **Close to 100%** of individuals using the Wellness Desk said they got the help they needed, and more than 97% said they had a clear next step.

 **1,428** single-session therapy sessions

 **194** family support visits

In late 2024, Wood's Homes received an I Partner With My Public Library Award for our Wellness Desk collaboration with Calgary Public Library. Selected as one of 11 winners from 61 North American entries, the honour underscores our commitment to making mental-health support accessible to all Calgarians.



Research Chair Message

Wood's Homes is experiencing an all-time high in research innovation, and our vision of virtual simulation training is now a reality.

Over the last three years my team has developed and refined a suite of **Virtual Gaming Simulation (VGS)** scenarios - interactive, online modules that let child- and youth-care practitioners test their skills in realistic client situations such as aggression or self-harm. After each play-through, participants watch the consequences of their choices and engage in structured self-reflection, deepening both relational and reflective practice.

This work was funded by the **Social Sciences and Humanities Research Council of Canada** to explore how Relational and Reflective Practice shows up in congregate-care settings. We began with a concept review of practice standards, then recruited **92 staff** who completed a VGS and a live simulation with a trained young actor. Their insights are now being transcribed and analysed; preliminary findings will appear in next year's Report.

Our second major study examines **trauma-informed design (TID)** within therapeutic campus-based care. **Cottage E** - featured at the front of this report - is Wood's Homes' first purpose-built, 5,000-square-foot residence designed entirely around TID principles. Using a photo-voice method, residents will capture images that illustrate how space influences safety, dignity and healing. Their lived experience will guide future building projects across the agency.

Both projects exemplify community-based research that places young people at the centre of every question. By bridging academic rigour with practice wisdom, we equip staff with cutting-edge tools, elevate client voice, and drive sector-wide improvement.

I am honoured to advance this work alongside the Wood's Homes community - and excited for the discoveries that lie ahead.



"I am honoured to advance this work alongside the Wood's Homes community - and excited for the discoveries that lie ahead."

Dr. Angelique Jenney, PhD
Research Chair in Children's Mental Health

Dr. Angelique Jenney, PhD

Research Chair in Children's Mental Health
Wood's Homes

Scan or click the QR code to view our recruitment video and see the technology in action.

Video URL: <https://www.youtube.com/watch?v=R2ndDTdJHio>



Healthy Workplace Culture

The future lies with our staff

Wood's Homes is proud to count 600 dedicated employees who work day and night across the province, caring for over 15,000 people every year.

Our People and Culture Department (P&C) plays an essential role in the well-being of all our employees and, like all areas of the agency, continuously seeks ways to refine and improve processes.

Their work is based on a foundation of 4 pillars: Attract, Align, Develop and Reward.

With this in mind, 2024 was a time of fostering growth, building a resilient, engaged workforce, leveraging new technologies, and launching various new initiatives.

The focus was on refining psychological safety, inclusivity and belonging, leadership development, and retention.

Enhancing the new staff onboarding process was a major initiative to improve retention by strengthening early engagement, and providing clearer career development opportunities.



In 2024, Wood's Homes successfully executed four pivotal initiatives to enhance employee development, recruitment, resilience and data utilization. They include:



1 A Learning Management System



2 Predictive Index



3 (BOS) Before Operational Stress Training



4 Improved Performance Metrics

Updates on these initiatives appear on Page 13.

A Learning Management System

Launched in late 2023, further enhancements were made to this system (the agency's first-ever). The focus was on refining the system to ensure better alignment with processes to meet legislative compliance and provide a more seamless learning experience.

BOS Training

This online course (first introduced to the agency in 2023) was designed for first responders but its concepts are relevant and adaptable to frontline positions. In 2024, in partnership with [Wayfound](#), Wood's Homes launched the first-ever Social Services BOS training, featuring industry-specific scenarios and insights from the agency. This pioneering program positions Wood's Homes as an industry leader. Additionally, we integrated a customized online Before Operational Stress (BOS) training course into our onboarding process—the first of its kind for the Social Services sector—featuring real scenarios from Wood's Homes to strengthen psychological resiliency.

Predictive Index

This year, we integrated the Predictive Index (PI) into our recruitment process to support better job fit and hiring decisions. The PI tool evaluates candidates across four key behavioral drives—dominance, extraversion, patience, and formality—to align individual strengths with role demands. Hiring leaders receive customized behavioral insights to guide interview questions and selection. This approach not only improves hiring confidence but also supports long-term employee retention through stronger role alignment.

Improved Performance Metrics

Annual employee satisfaction surveys and Stay interviews (why staff stay) are among several other ways now used to better understand challenges and inform decision-making.

Other ongoing initiatives

Career Development Process

Clear competency milestones and growth plans designed to boost retention, engagement, and internal mobility across all frontline roles.

Organizational Needs Assessment

Policies, training, and feedback loops that ensure every employee feels safe, supported, and heard in daily practice.

Leadership Training Integration

Embeds Inclusivity principles and psychological safety practices into all future leadership courses to reinforce belonging, supportive management agency-wide.

Enhancing staff onboarding (The Academy)

A standardized three-week program—now front-loading Therapeutic Crisis Intervention and shadow shifts—to embed COR-aligned competencies from day one.

Leadership Development Framework

A structured pathway of targeted learning that equips all leaders to lead high-performing, values-driven teams.

Psychological Safety Management System

Policies, training, and feedback loops that ensure every employee feels safe, supported, and heard in daily practice.



Evolving needs help build inclusivity and belonging

Our journey toward strengthening our commitment to service excellence and cultivating a community where everyone can thrive remains the cornerstone of our mission. A deep focus on creating a true sense of belonging for both clients and staff has shaped our direction, bringing clarity to our values and reinforcing our dedication to equity and inclusion.

Over the year, we prioritized sustainable practices across several key initiatives. Among them, a continued investment in staff training, with intentional approaches to recruitment and retention that reflect the rich tapestry of the communities we serve, and a responsive mindset grounded in innovation and creativity. Through these efforts, we aim to meet the evolving needs of those around us with purpose and empathy.

With the future in mind, we are taking thoughtful steps forward, guided by the insight and collaboration of our Diversity, Equity and Inclusion Committee, the Wood's Homes Boards of Directors, and our leadership. Together, we are shaping a path that ensures our organization remains adaptive, inclusive, and committed to continuous growth.

To build our internal capacity, we have engaged with community experts, such as the Centre for Sexuality and Shades of Humanity, to enhance our ability to serve with integrity and understanding.

We are committed to fostering an environment that prioritizes psychological safety, a strong sense of belonging, and a broad range of perspectives. These principles continue to challenge and inspire us to learn, evolve, and strengthen our practices.

Indigenous Initiatives Message



When I think of *The Future in Mind*, I picture a garden already alive with colour. This year we opened the Indigenous Initiatives Centre - a living heart, a spirit that gathers knowledge, teachings, stories, and prayers from every corner of Wood's Homes. It is not mine, nor any one person's. The Indigenous Initiatives Centre has its own spirit. Elders and Knowledge Keepers come to share in planting seeds for the many young people who seek to create a good life, offering songs, prayers, and blessings. Tobacco is a gift we share with many, and all feel the blessings when we walk in such good ways with generosity and respect.

It has been shared with us that part of "two-eyed seeing" is also "**two-hands doing.**" One hand honours what we have done: Blackfoot cleansings blessed our Buffalo Circle and Strong Winds homes; a naming transfer gifted *Isspoomstoyis* and *Miistsoiyis* to our Lethbridge programs; and a Spring Feast and Friendship Dance drew more than 200 relatives to pray, eat, and round-dance beneath the prairie sun. The other hand reaches forward - planting seeds of change. We welcomed more Indigenous staff than ever and formed four Communities of Practice so Firekeepers, nurses, and counsellors can cultivate culture into daily care across Alberta.

Alongside these circles, staff completed the Allyship Toolkit modules, sharpening their ability to walk with us in good ways. Dozens of cultural consultations now guide programs on everything from smudge protocol to land-based therapy, proving that curiosity and respect make fertile soil.

Already the first shoots are visible. Young people in Lethbridge sew sharing-circle cushions, medicines are ground for our sixth annual mixing ceremony, and smudge smoke can often be seen rising through the tipi poles at the Wood's Homes Bowness campus. Each act adds a ring of nourishment around the roots of this community.

But the blossoms are still to come. Every time sweetgrass is lit, every cultural map that is completed, and cultural plan that is brought to life, we strengthen the soil. I imagine a day when every young person who knocks on our door is greeted by space, language and care that mirror who they are - and who they will become. May the flowers of this good work scatter seeds of their own for generations yet unseen.



"The seeds we plant with two hands - one honouring the past, the other reaching forward - will blossom into a future where every young person feels they belong."

matotisân asinîy Tye Rhyno - Manager,
Wood's Homes Indigenous Initiatives

matotisân asinîy Tye Rhyno

Manager, Indigenous Initiatives
Wood's Homes

Courageous strategic growth through external audiences

Growing Lethbridge with community at its core

Strategic growth is most powerful when it is shared. Nowhere is that clearer than in Lethbridge, where Wood's Homes spent the past year turning collaborative ambitions into on-the-ground impact.

2024 at a glance

A hub built with the city, for the city opened in partnership with the City of Lethbridge and Alberta Children's Services in January 2024. The **Lethbridge Opportunity Hub** sits steps from the transit mall and serves as a front door to mental health, housing, employment, and cultural supports. Clients under 24 can move from resumé coaching to trauma counselling to a cooking class without changing buildings or intake forms. Local employers host monthly hiring fairs; and Indigenous Elders lead drumming and beading circles that connect young people to culture and pride.

Safety when crisis hits

Just three blocks away, the Emergency Youth Shelter provides overnight beds, meals, and immediate family-mediated support to young people under 18. Operated in coordination with police, schools, and Alberta Health Services, the shelter also delivers PSECA programming that prevents sexual exploitation and offers 24/7 phone help to worried caregivers.

Culturally rooted group care

Lethbridge welcomed Buffalo Circle and Strong Winds - adding nine new beds to our community group-care services. Before the home opened, Blackfoot Elders performed a cleansing, then formally transferred the names *Isspoomstoyis* (a dwelling offering help and support) and *Miistsoiyis* (a home made of wood). The program now operates with an on-site clinician, AHS nurses, and school liaisons to create true wrap-around treatment.



By weaving services into existing community networks instead of building silos, Wood's Homes reduced referral wait-times by 46 percent and ensured young people stay connected to friends, culture, and local opportunity. The formula - shared vision, shared resources, shared success - will guide every new venture we launch across Alberta.

Wood's Homes is proud to count its close relationships with other agencies and the community in Lethbridge. This allows us to provide integrated and diverse services that provide healing closer to home.

Courageous strategic growth through external audiences

Wood's Homes has been providing group-care treatment for decades – it is likely our most widely recognized service.

Over the past year, we added capacity in three regions – each project powered by different partners but sharing one goal: keep young people close to culture, school, and family.

Two new homes in Lethbridge: When southern Alberta called for more live-in treatment, our agency joined Children's Services, the City, and Blackfoot Elders to open **Buffalo Circle** and **Strong Winds**. Each residence blends intensive therapy with local culture. On-site AHS nurses, school-division teachers, and a cultural liaison give young people health, education, and identity support under one roof.

10 new beds on Calgary's Parkdale Campus: Cottage E replaces 1970s' cottages with North America's first trauma-informed, purpose-built facility. The additional beds are anticipated to cut waitlist days by 38 % and will allow pilots for neurodivergent programming. Funding came from government, corporate donors, and the *Through It All* capital campaign.

New partnerships: Expansion didn't stop at city limits. New partnerships with schools, mental health clinics, and cultural organizations in Strathmore, Fort McMurray, and Grande Prairie are widening our referral network and bringing best practices to rural communities through training days and case-consultation calls.

Every night, more young people than ever tuck in for the night at Wood's Homes in supported group care. Each bed represents a multi-agency partnership – proof that courageous growth happens fastest when we grow together. We are weaving a stronger provincial safety net so integrated mental-health services are within a young person's reach.



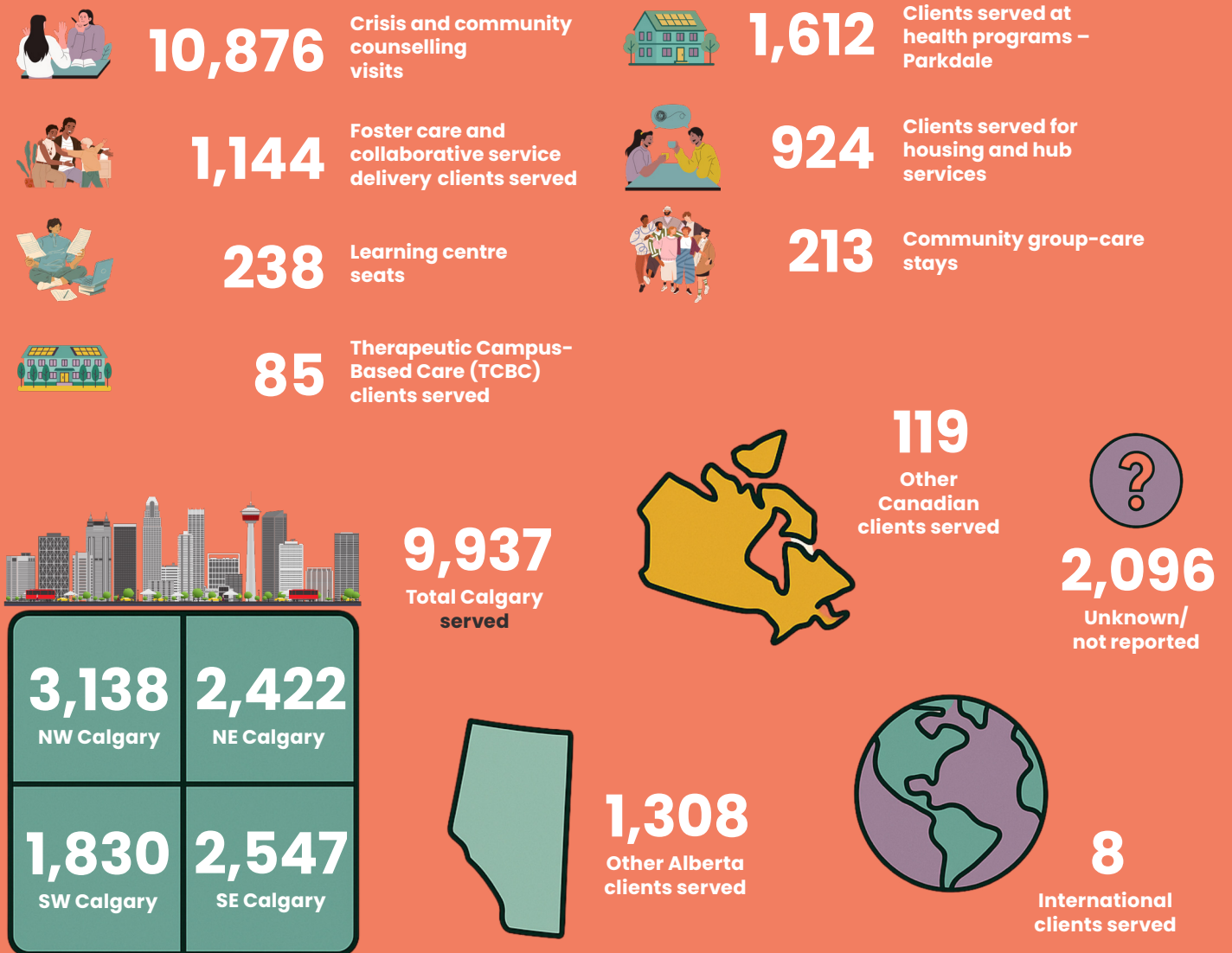
Impactful Community Engagement

Wood's Homes is based in Calgary (comprising three large campuses and programs in several neighbourhoods) with additional locations in Lethbridge, Strathmore, Fort McMurray, Cold Lake, Lac La Biche, and Grande Prairie.

Each year, our 600 staff, foster parents and caregivers provide 40+ programs and services for over 15,000 children, young people, families and adults.

Our work is essential to the communities we serve.

In 2024:



Impactful Community Engagement



Community is the beating heart of Wood's Homes, and this past year proved it. From Coldest Night of the Year walks in Calgary and Lethbridge to our first appearances at the Lilac Festival and Sober Stampede, staff and volunteers met Albertans where they gather, listen, and celebrate. We honoured culture through the Spring Feast and Friendship Dance and marched proudly in both the Calgary and Lethbridge Pride parades. Fund-raisers such as Fabulous and Fluevog, two golf tournaments, and our signature Never Give Up Galas in Calgary and Lethbridge rallied businesses, neighbours, and donors behind mental health care.

A proclamation of Mental Health Day at Calgary Public Library, our Stampede Breakfast for 2,000 guests, and December's 'Wood's Homes for the Holidays' reminded the community that help is only a call or click away. Across 20 major events and dozens of classroom talks, we reached more than 45,000 Albertans, sparked new partnerships, and reminded long-time allies why their support matters. Every interaction tightens the weave between Wood's Homes and the communities that rely on us – ensuring help is visible, approachable, and always within reach.

Preferred venture and community partner

Today I write with profound gratitude and a full heart.

Because of this community's unwavering generosity, Wood's Homes achieved something truly historic: the completion of our flagship Cottage. You made this possible.

I often picture our agency as a single, enduring tree - roots anchored in 110 years of service, branches that reach every corner of Alberta, and leaves that shelter young people in search of hope. Your gifts help keep our tree alive!

Here is how your generosity has helped us flourish over this past year:

Trust - Consistent giving is the base of our sturdy trunk - it holds everything together.

Care - Every one of our 40+ programs is a branch reaching outward.

Hope - Every child we help is a leaf nourished because of the light you provide.

Innovation - Your belief in our vision fuels our growth: The new Cottage E, additional foster care and group care beds, our expanded Hub services.

Future - Every donation plants the seeds for the next generation.

In 2024, we celebrated the momentum of our 'Through It All' capital campaign - an ambitious \$40-million initiative. Thanks to you, we are well on our way.

We also marked 110 years of Saying Yes in 2024, as our founder Reverend George Wood did in 1914 when he agreed to take in two children. Our donors say yes each time they agree to help those struggling with mental health. Saying Yes has allowed us to expand our services thereby responding to the increased demand.

Philanthropy can feel abstract until you meet a 14-year-old who finally sleeps through the night or a mother who hears "We can help" instead of another waitlist. Those moments are why we fundraise, steward, report, repeat - and why I am so grateful for your trust.

With deepest appreciation,



Philanthropy is abstract - until you meet a 14-year-old who finally sleeps through the night.

Bryan Goehringer - Director,
Wood's Homes Foundation

Modern Infrastructure Based on Best Practice

Building for tomorrow, right here in Bowness



The cottages that anchor our Bowness campus have served thousands of young people since the 1970s, but their era is ending. Our new purpose-built facility, shown in these renderings, signals the next chapter.

Designed with trauma-informed principles, the two-storey building will replace aging infrastructure and add flexible therapy, learning, and gathering spaces under one roof. Floods of natural light, muted acoustics, and sightlines that promote both privacy and connection create an environment where safety and healing go hand in hand.

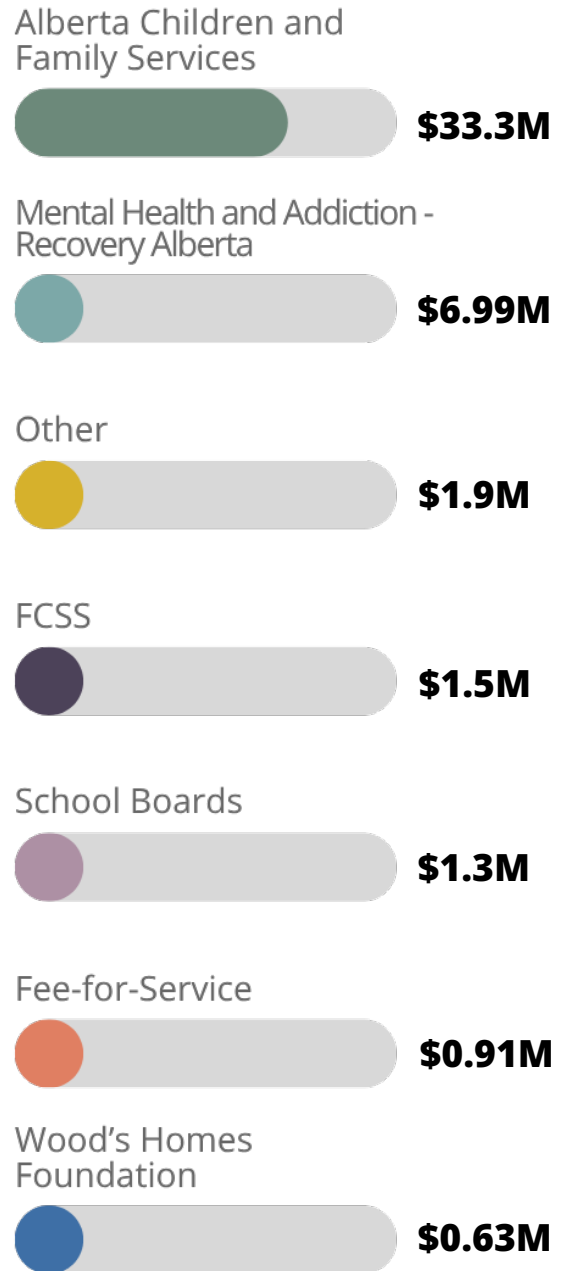
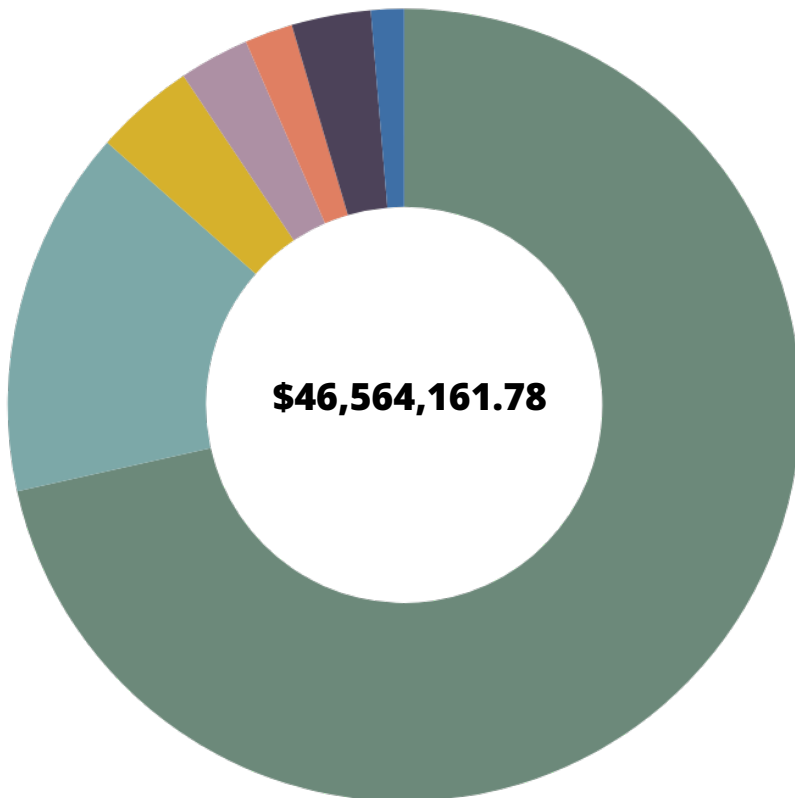
Sustainability matters, too: a high-efficiency envelope, rooftop solar array, and drought-resistant landscaping will lower operating costs and shrink our carbon footprint – redirecting resources back to client care.

Construction will begin as soon as our capital goal is met. With your partnership, we can give young people a home that matches the quality of care they deserve and carry Wood's Homes boldly into its second century.

Financial Statement

April 1, 2024 – March 31, 2025

- Alberta Children and Family Services
- Mental Health and Addiction - Recovery Alberta
- Other
- School Boards
- Fee-for-Service
- Family and Community Support Services (FCSS)
- Wood's Homes Foundation



Their future is coming into focus.





WOOD'S HOMES

**We build good mental health and well-being
so everyone can thrive in their community.**

**Wood's Homes - Parkdale Campus
805 37 St. NW Calgary, T2N 4N8
403-270-4102**

woodshomes.ca

